

University of South Carolina Russell House Grand Market Place (GMP) Roof Replacement

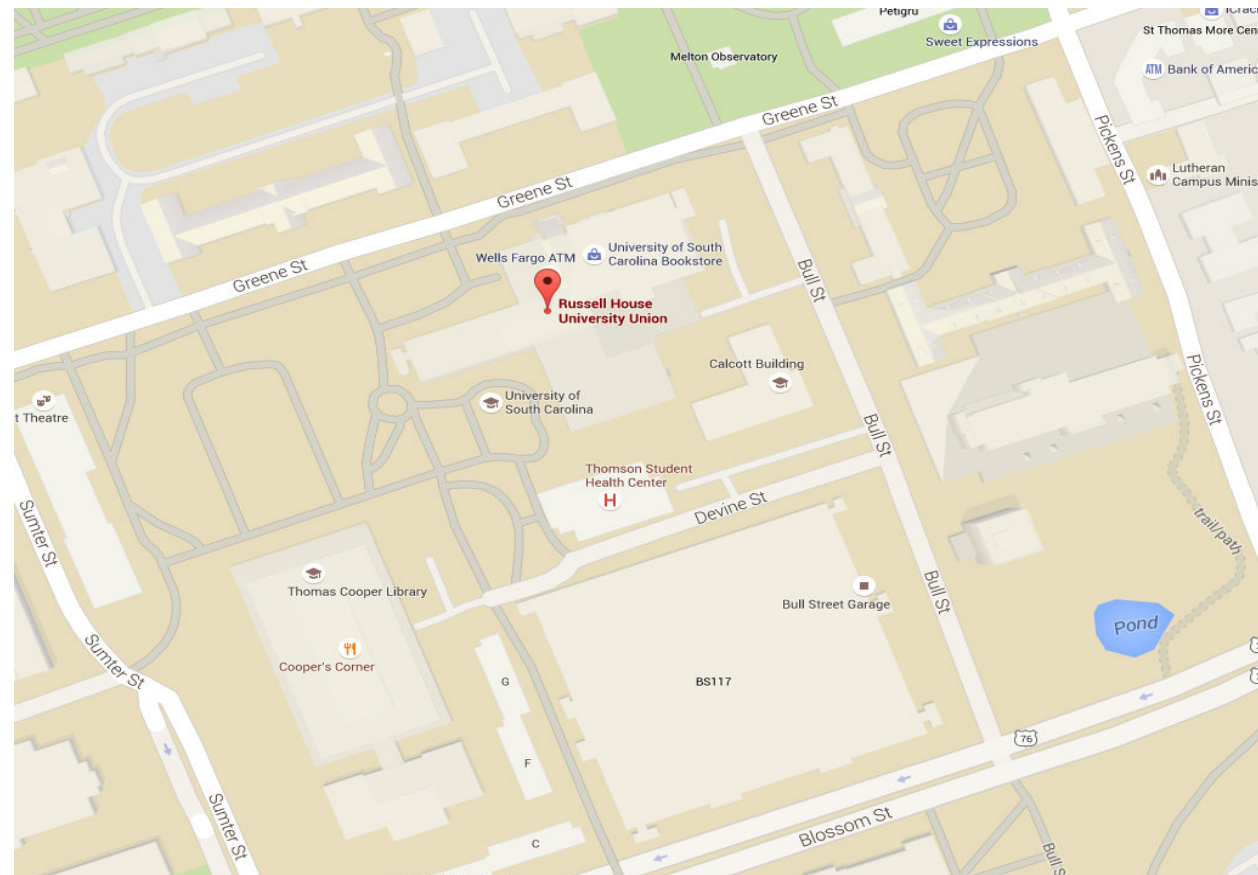
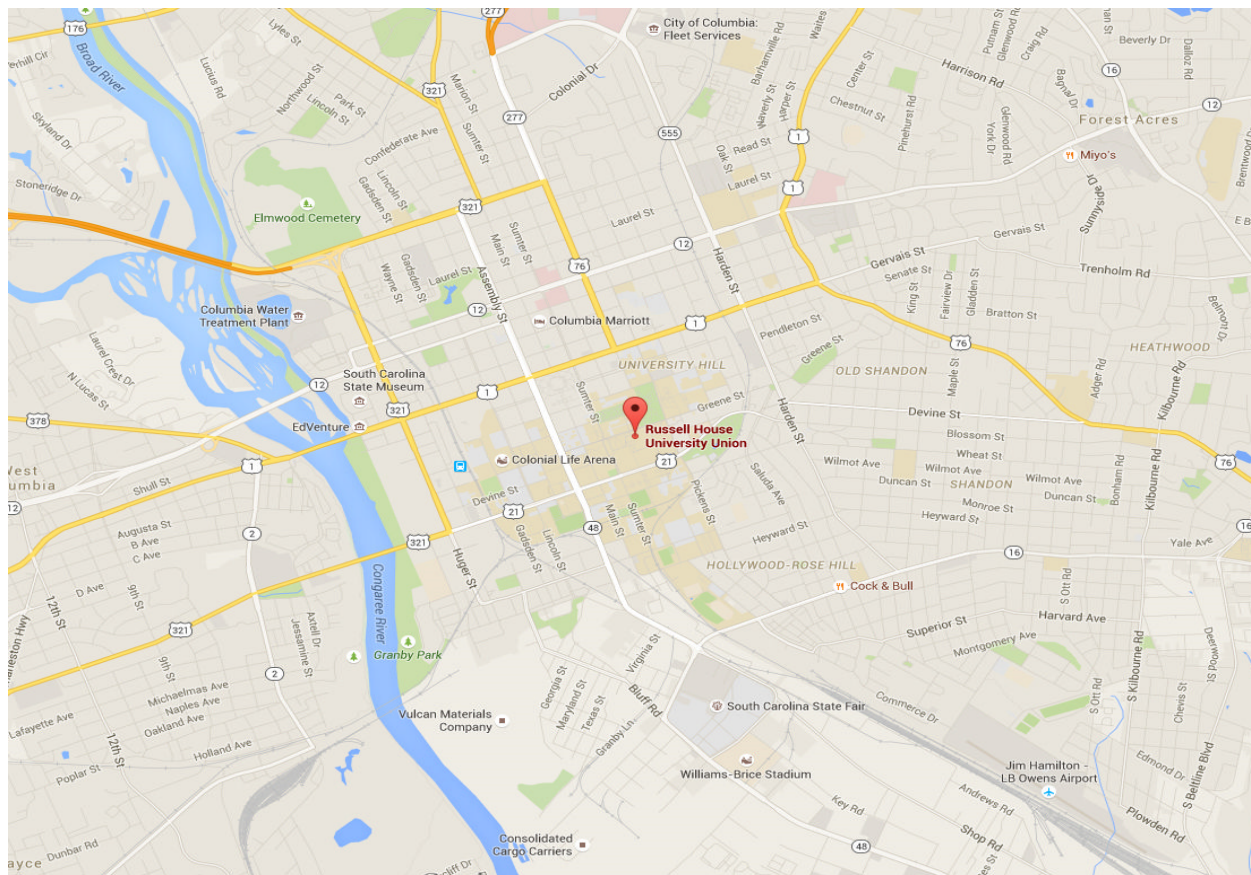
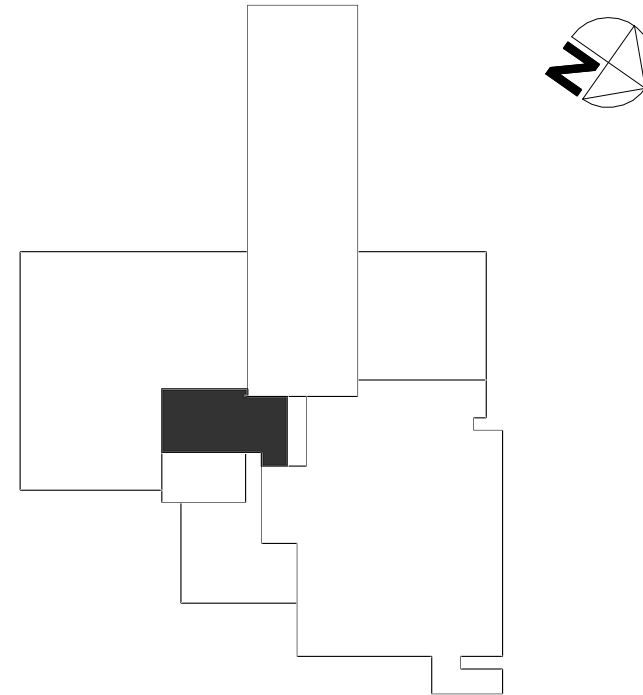
Notes:

Drawing Index

- T-1 Title Sheet
- R-1 Roof Plan - Existing Conditions
- R-2 Roof Plan - New
- D-1 Roof Details
- D-2 Roof Details
- D-3 Roof Details
- M-1 Mechanical - Roof Plan
- M-2 Mechanical - Details

Roof Key Plan

Russell House Student Union
1400 Greene Street
Columbia, South Carolina 29208



I		05/15
No.	Revision/Issue	Date

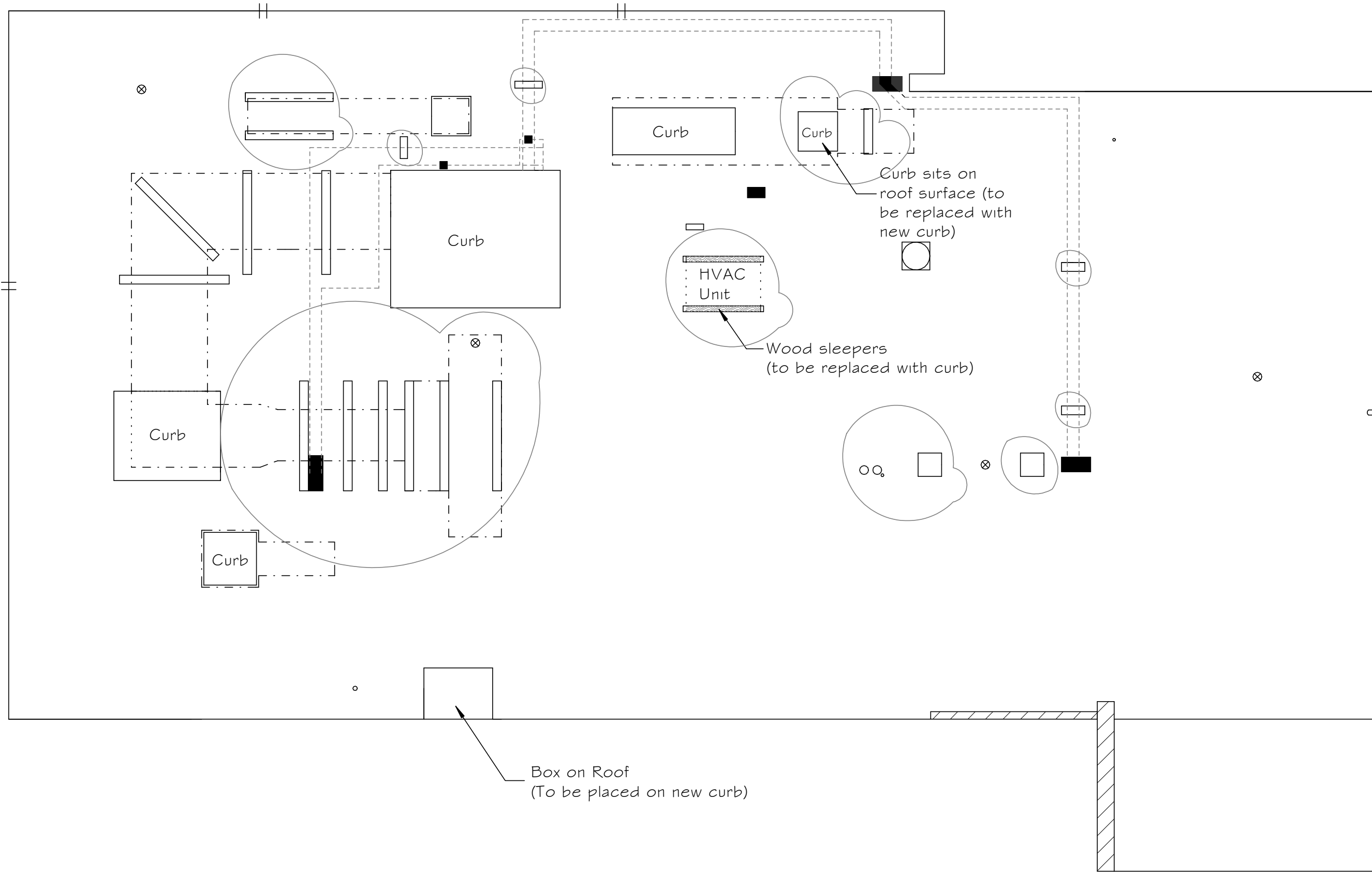
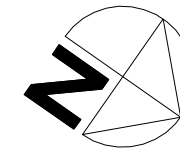
University of
South Carolina
Russell House
Grand Market Place (GMP)
Roof Replacement
(H27-Z223)

T-1
(Title Sheet)

Prepared by
Lyon & Associates
Roofing and Waterproofing
Consultants




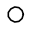


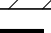



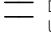
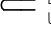



Date	05/20 15	Sheet	1 of 8
Scale	Not to Scale		



Notes:

Roof Key:

-  Curb
-  Roof Drain
-  Vent on Curb
-  Plumbing Vent
-  Wood Sleeper
-  Equipment Rail
-  Coping
-  Pitch Pan
-  Equipment Outline
-  Water Lines
-  Downspouts From Upper Roof Elevations
-  Leader From Upper Roof Elevation
-  Items to be removed



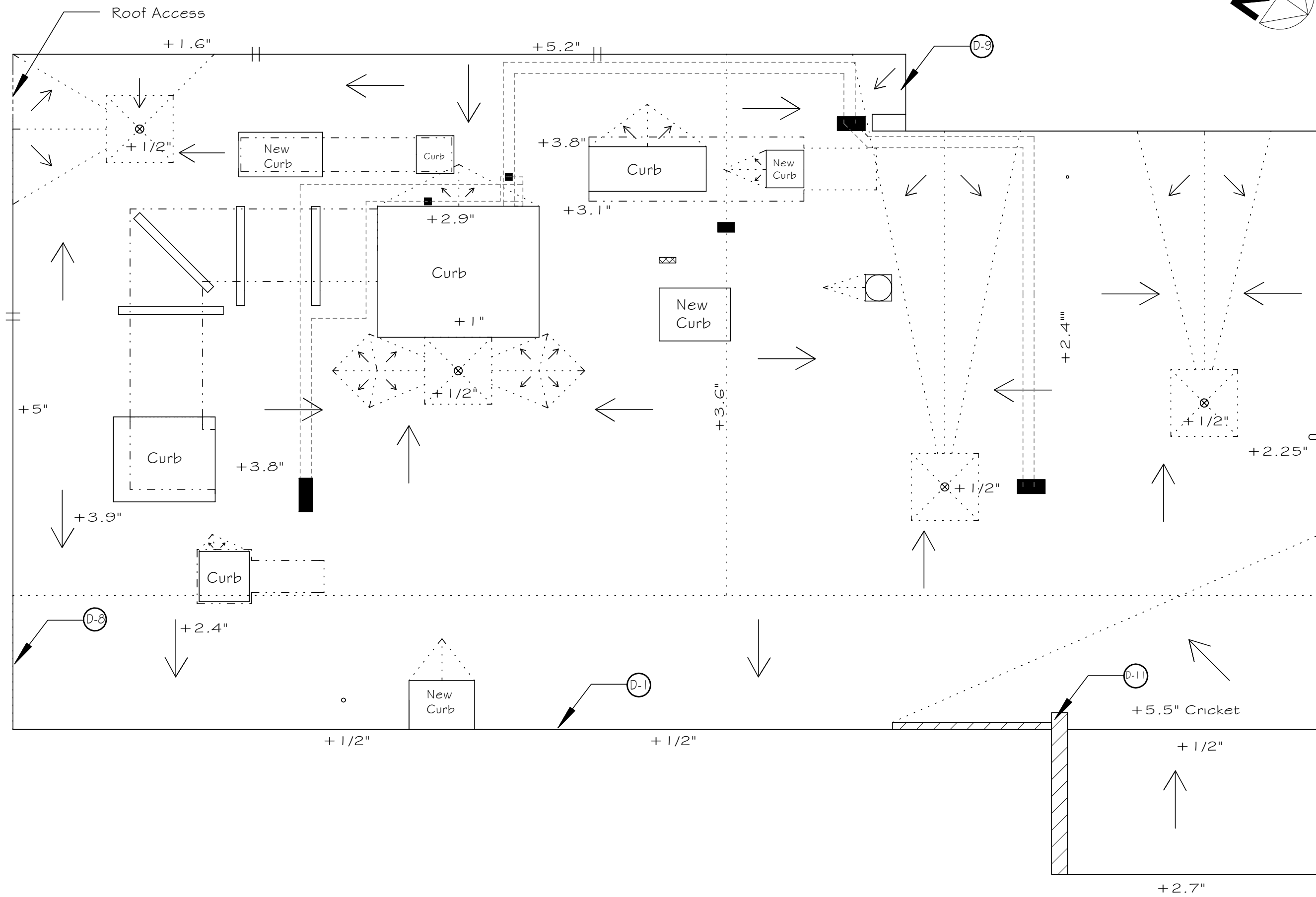
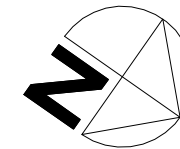
1		05/15
No.	Revision/Issue	Date

University of South Carolina
 Russell House
 Grand Market Place (GMP)
 Roof Replacement (H27-Z223)

R-1
 Existing
 Roof Plan w/
 Demolition

Prepared by
 Lyon & Associates
 Roofing and Waterproofing
 Consultants

Date	05/2015	Sheet
Scale	Not to Scale	2 of 8



Notes:
 Indicated insulation thickness must be confirmed by shop drawings. Thicknesses indicated are for tapered insulation only and do not include insulation base layer or coverboard.

Water line support locations are shown on Mechanical Drawing (M-1)

Keys to specific details are provided for clarity

Roof Key:

- Curb
- Roof Drain w/ 4' x 4' sump where insulation thickness allows
- Cricket
- Vent on Curb
- Plumbing Vent
- Equipment Rail
- Coping
- Pitch Pan
- Conduit Support
- Equipment Outline
- Water Lines
- Downspouts From Upper Roof Elevations
- Leader From Upper Roof Elevation
- Slope Direction Indicator

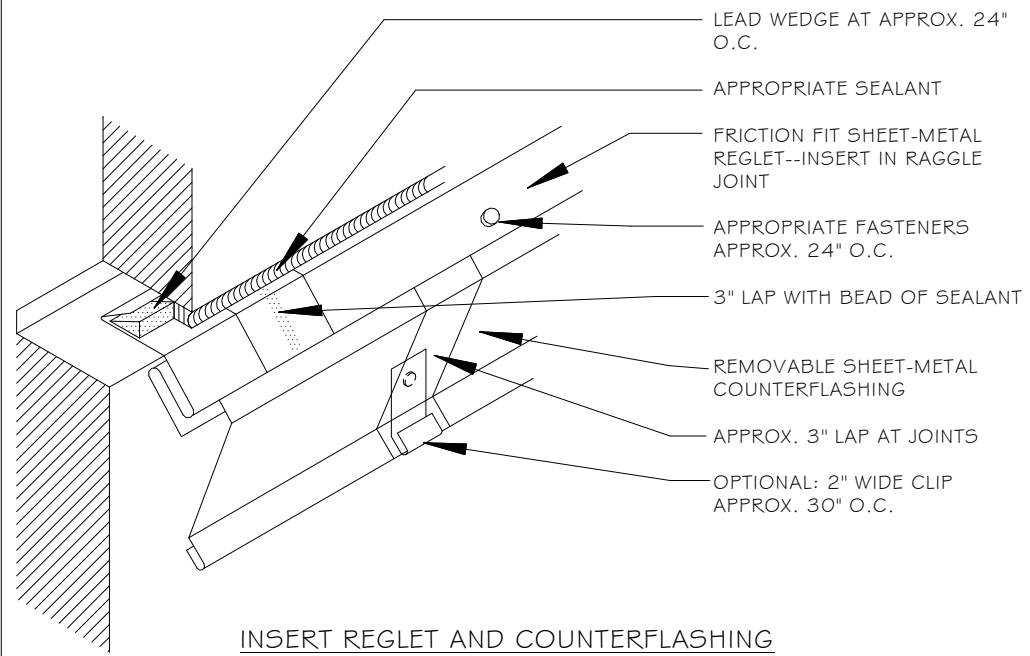
I		05/15
No.	Revision/Issue	Date

University of South Carolina
 Russell House
 Grand Market Place (GMP)
 Roof Replacement
 (H27-Z223)

**R-2
 New Roof Plan**

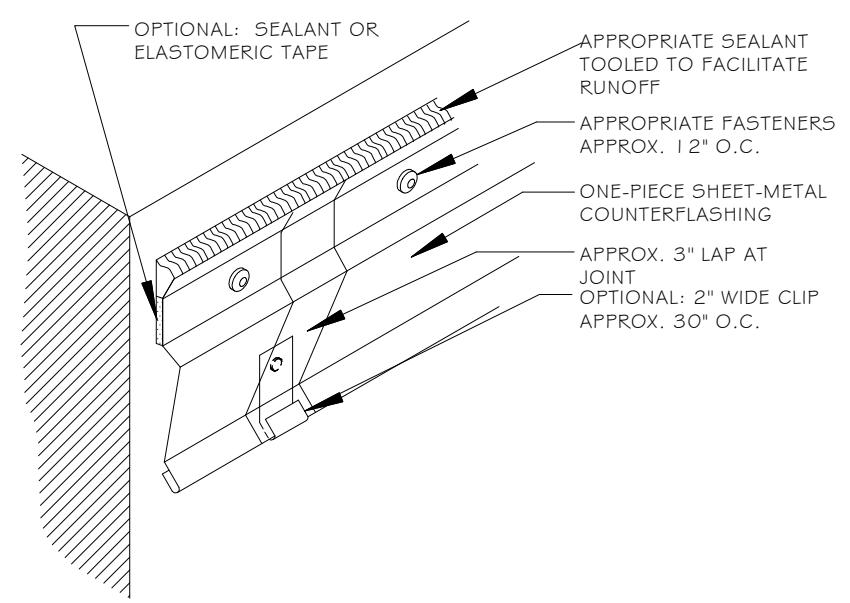
Prepared by
 Lyon & Associates
 Roofing and Waterproofing
 Consultants

Date	05/2015	Sheet	3 of 8
Scale	Not to Scale		

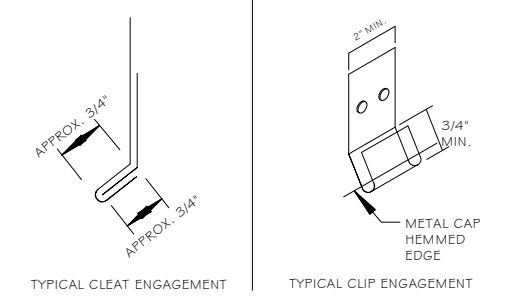
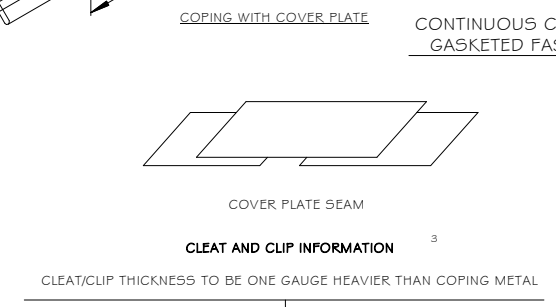
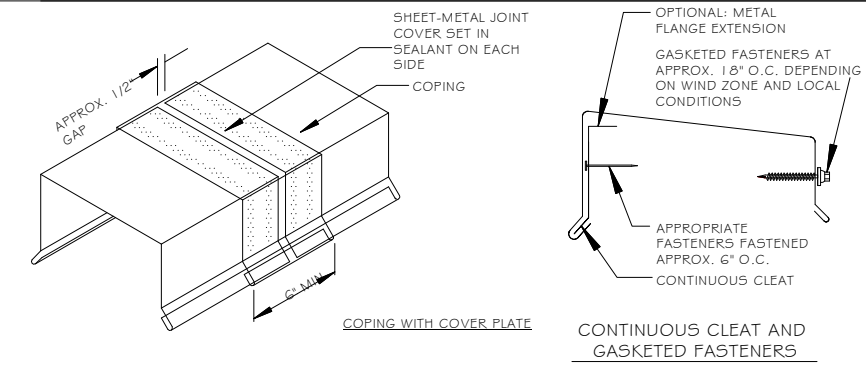


INSERT REGLET AND COUNTERFLASHING WITH OVERLAP JOINT

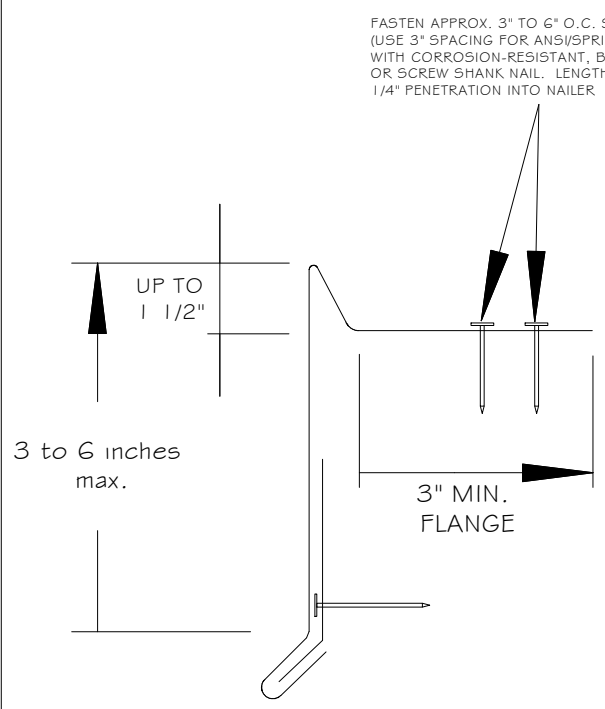
TWO-PIECE COUNTERFLASHING



SURFACE MOUNTED COUNTERFLASHING

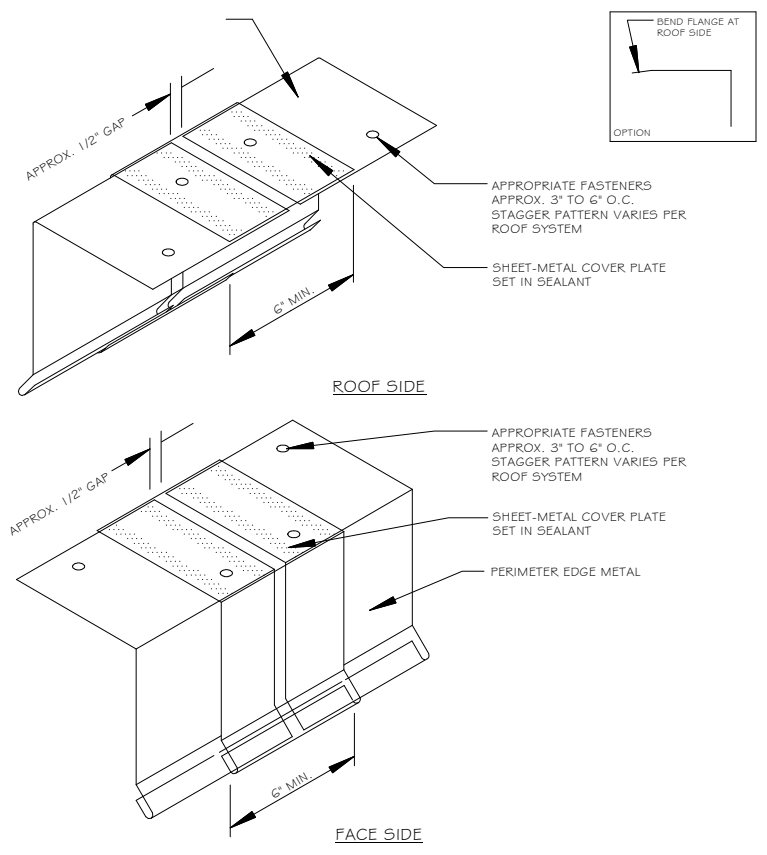


METAL COPING

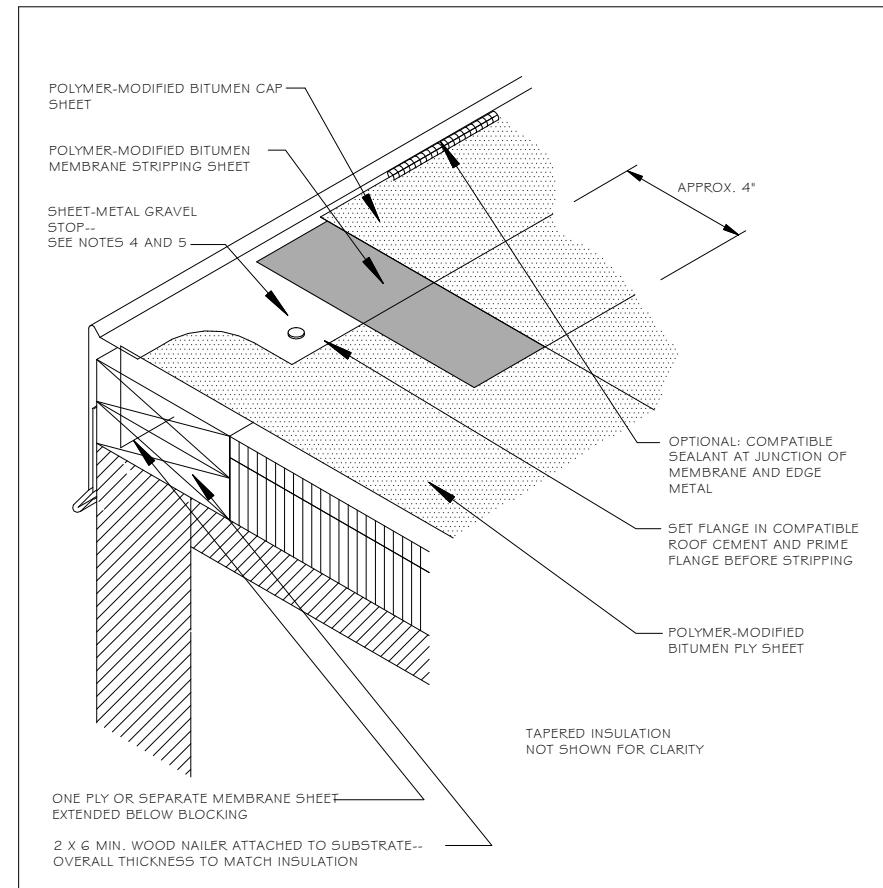


EMBEDDED EDGE (A-TYPE)

PERIMETER EDGE-METAL SECUREMENT



PERIMETER EDGE METAL WITH COVER PLATE



(D-1) EMBEDDED EDGE METAL FLASHING

Contractor Notes:

I		05/15
No.	Revision/Issue	Date

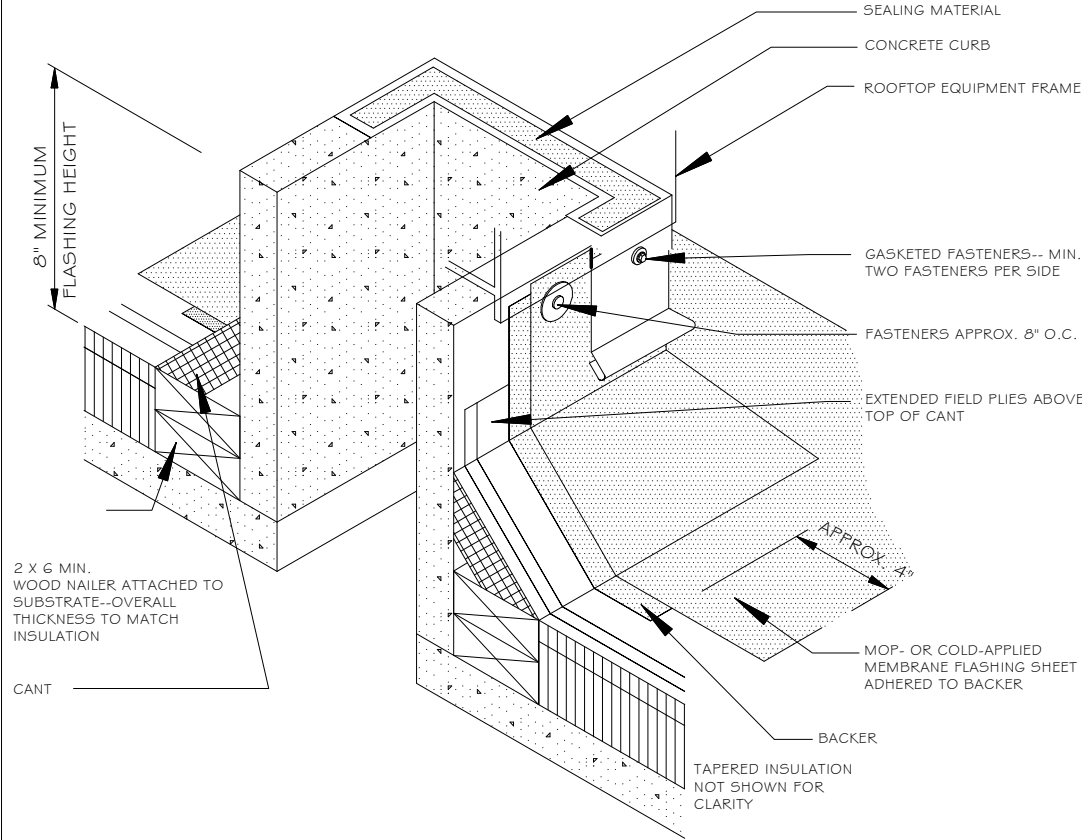
University of South Carolina
 Russell House
 Grand Market Place (GMP)
 Roof Replacement (H27-Z223)

D-1
 (Roof Details)

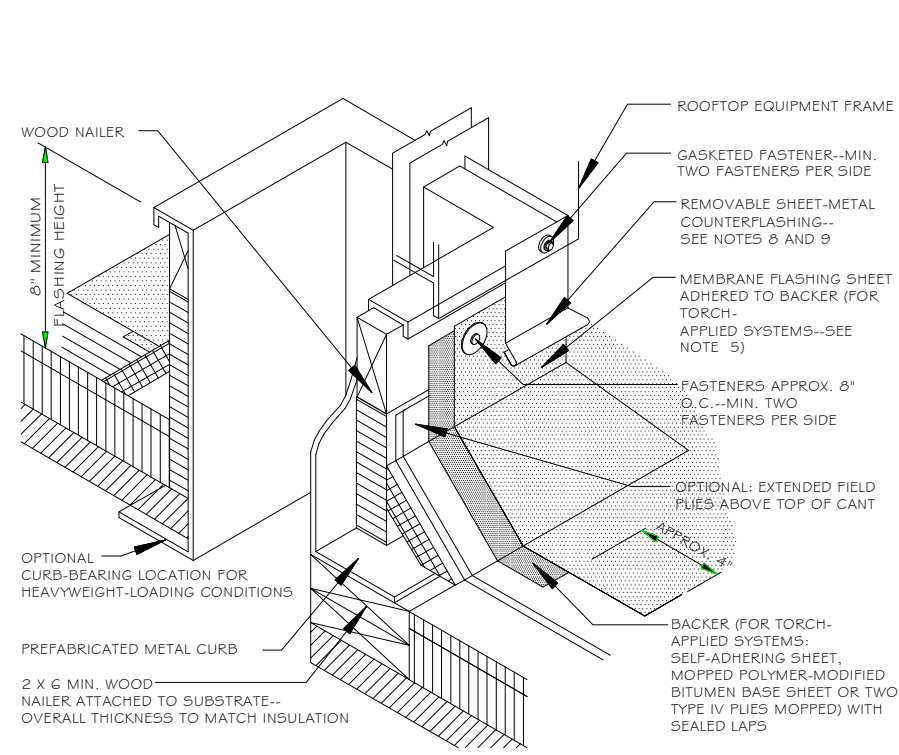
Prepared by
 Lyon & Associates
 Roofing and Waterproofing
 Consultants



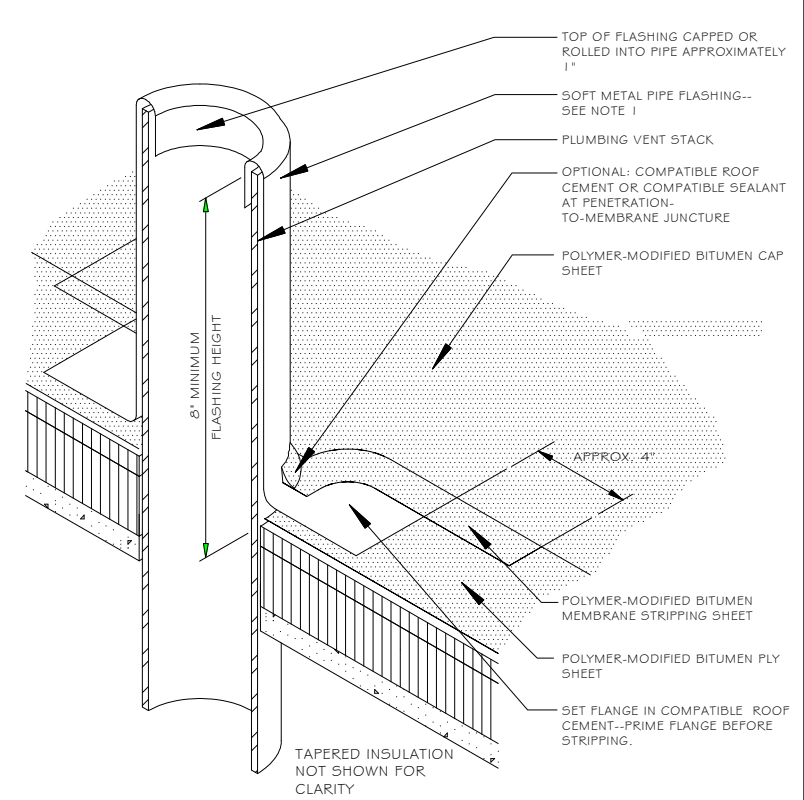
GENERAL SHEET METAL REQUIREMENTS



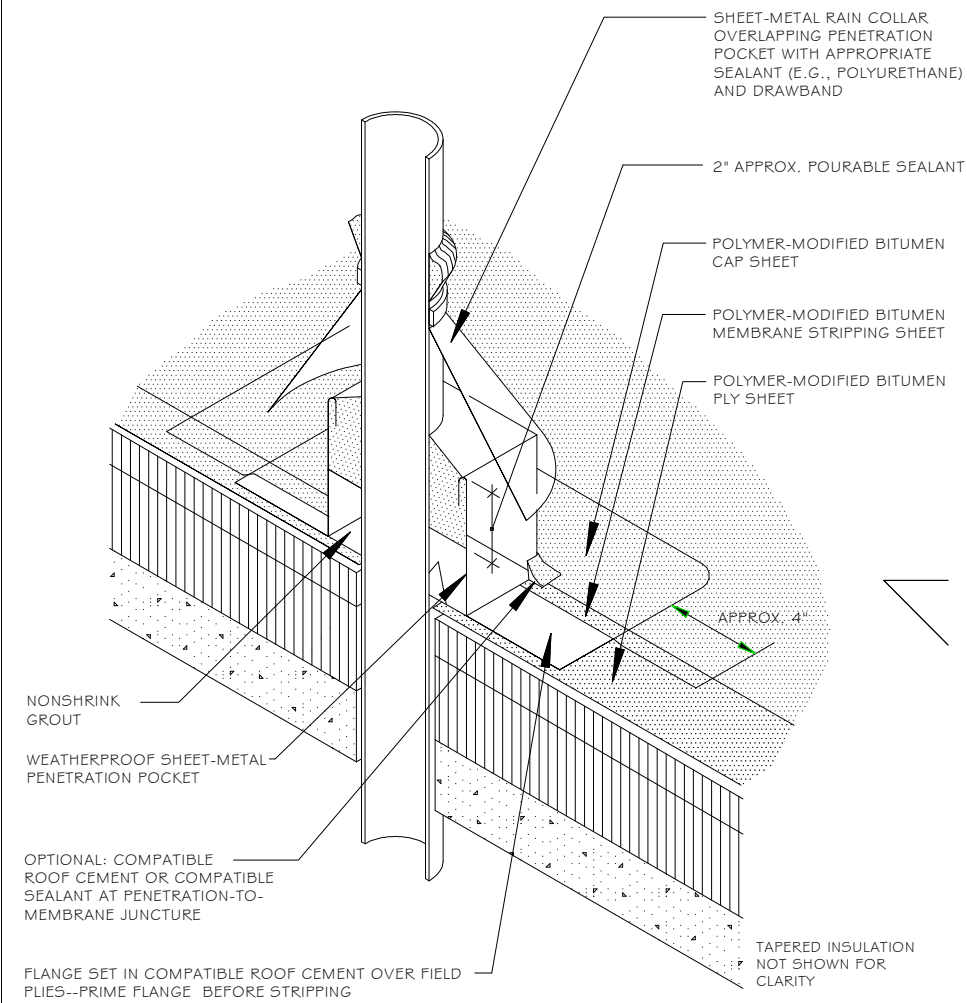
D-2 BASE FLASHING AT CONCRETE CURB LOCATIONS



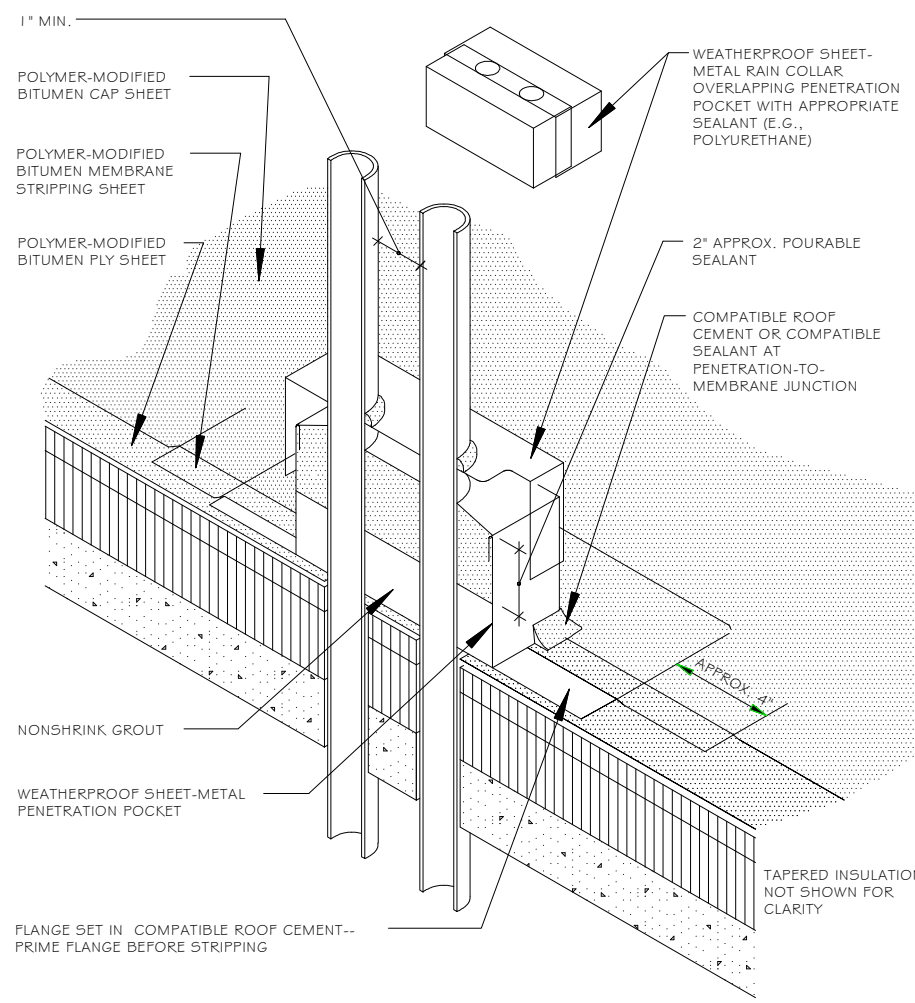
D-3 BASE FLASHING AT STEEL CURB LOCATIONS



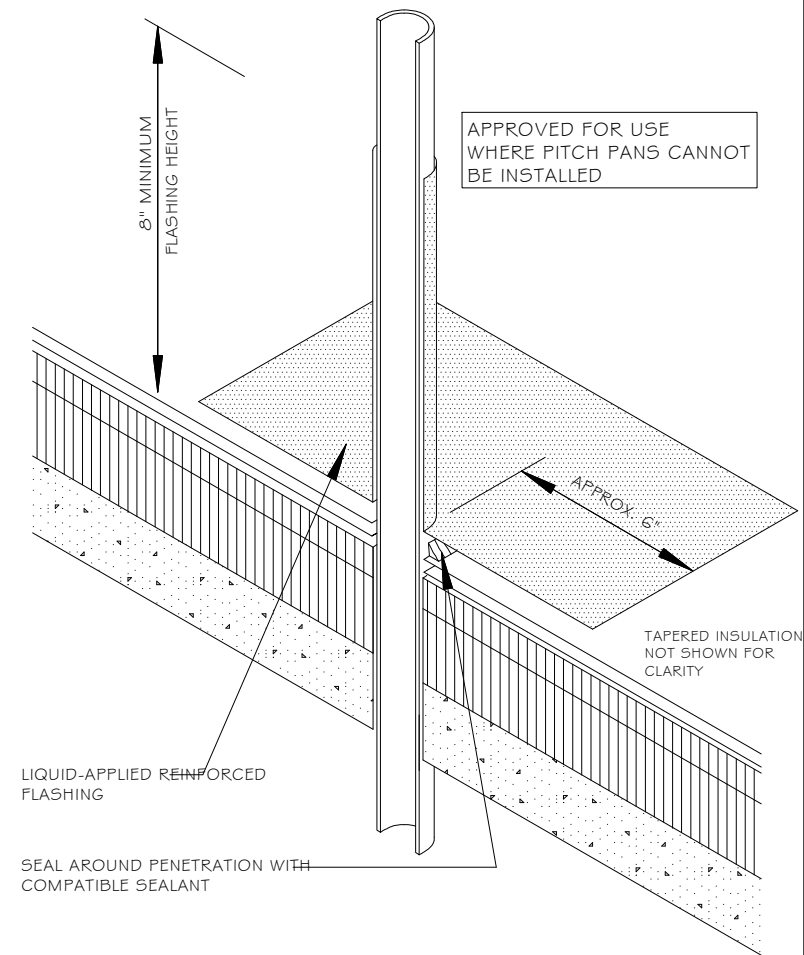
D-4 PLUMBING VENT



D-5 PENETRATION POCKET--SINGLE PENETRATION



D-6 PENETRATION POCKET--MULTIPLE PENETRATIONS



D-7 PIPE PENETRATION (LIQUID-APPLIED FLASHING SYSTEM)

Notes:

1		05/2015
No.	Revision/Issue	Date

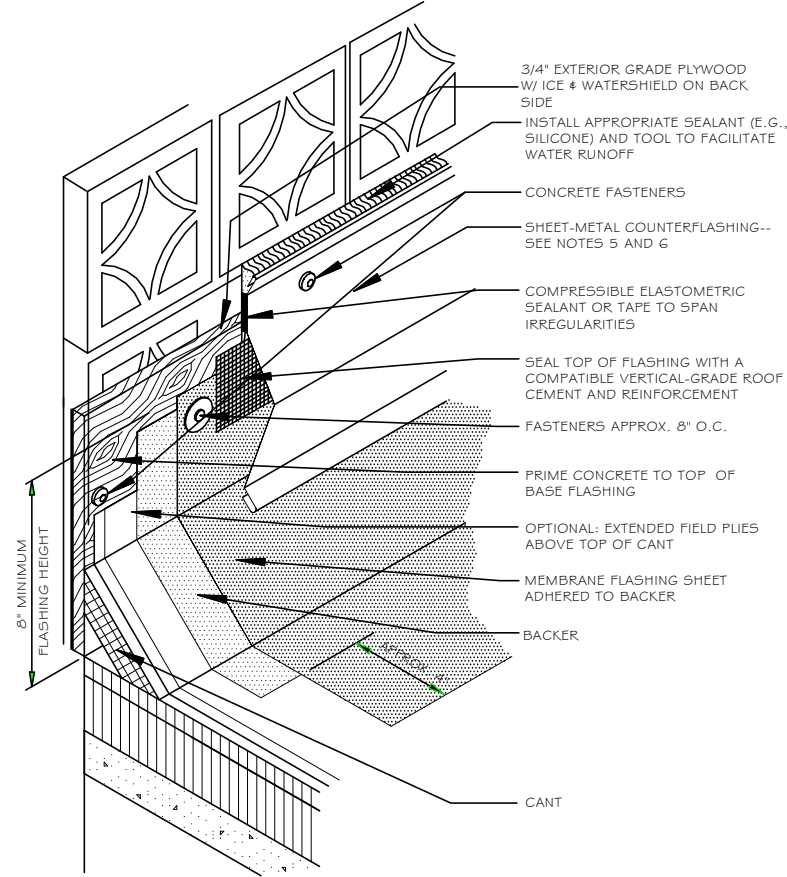
University of South Carolina
Russell House
Grand Market Place (GMP)
Roof Replacement
(H27-Z223)

D-2
(Roof Details)

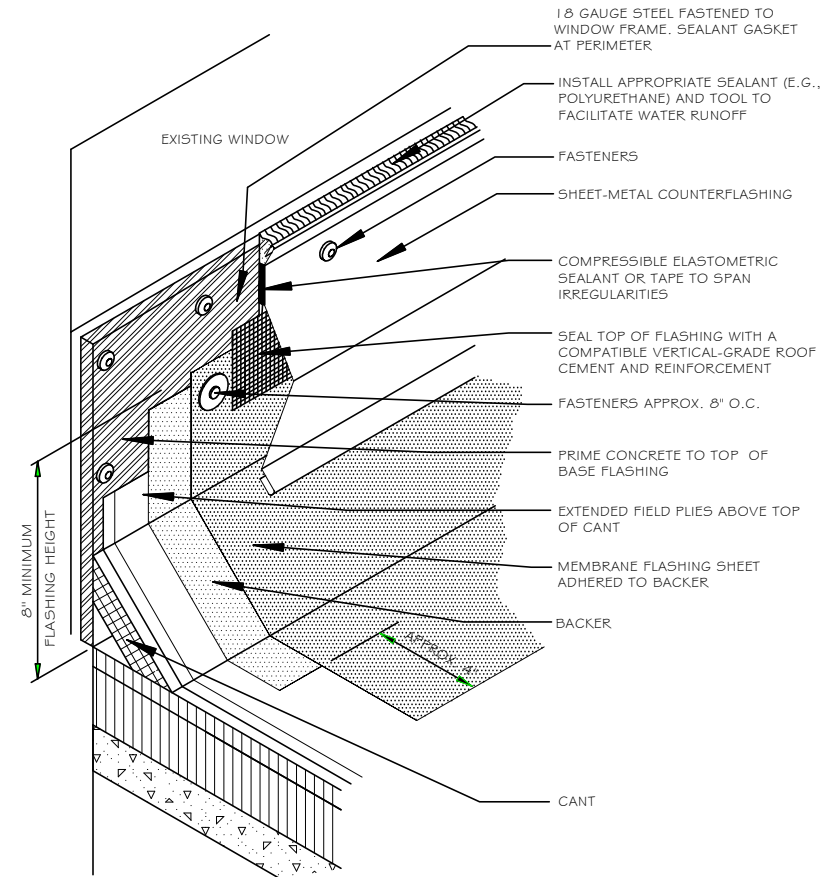
Prepared by
Lyon & Associates
Roofing and Waterproofing
Consultants



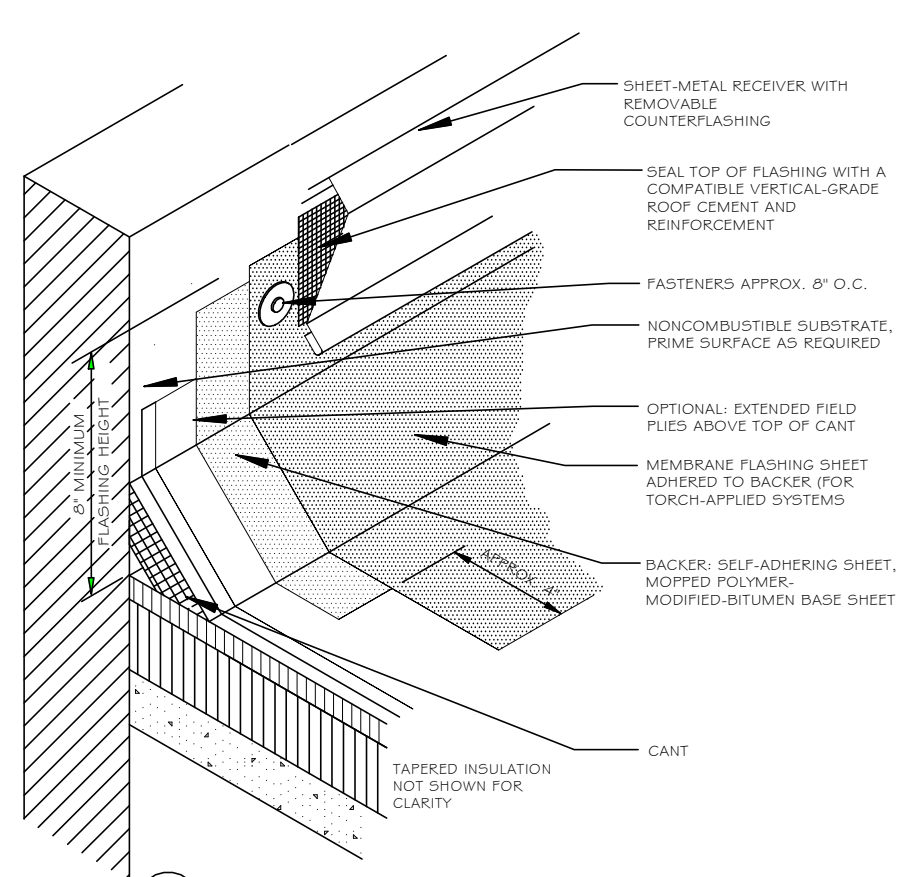
Date	05/2015	Sheet	5 of 8
Scale	Not to Scale		



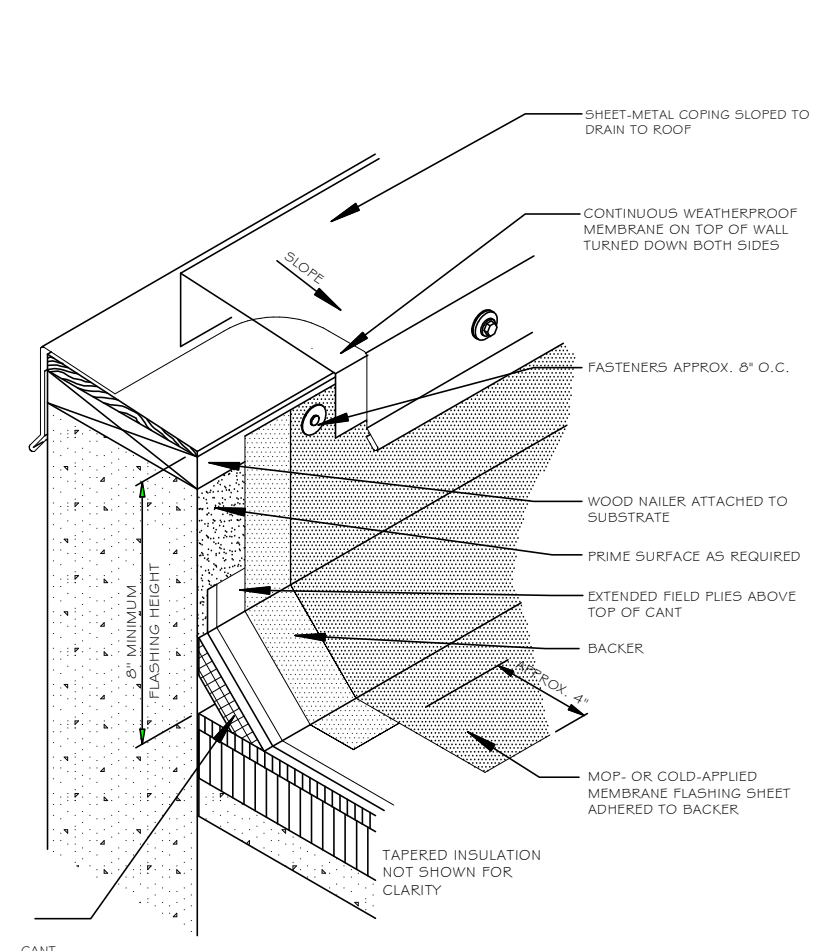
D-8 BASE FLASHING WITH SURFACE MOUNTED COUNTERFLASHING
(FOR USE AT DECORATIVE CONCRETE BLOCK LOCATIONS ONLY)



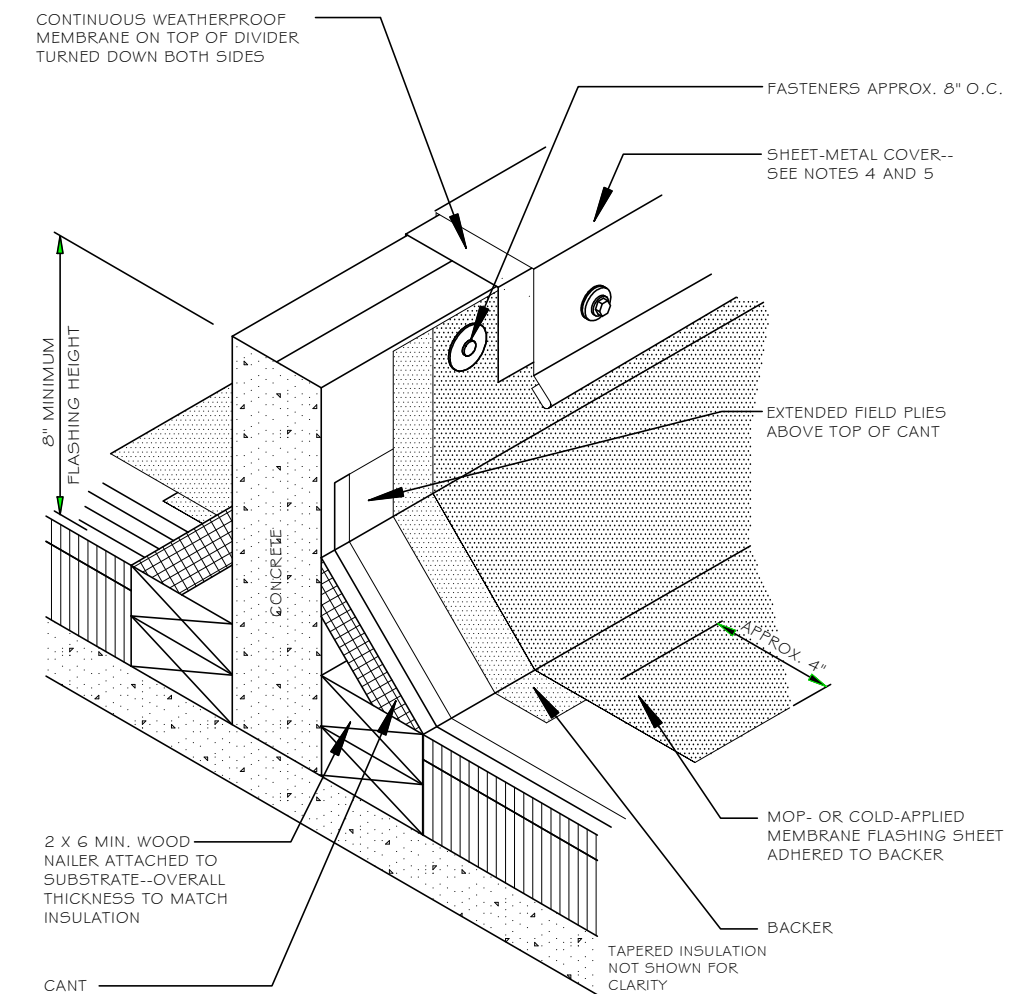
D-9 BASE FLASHING WITH SURFACE MOUNTED COUNTERFLASHING
(FOR USE AT WINDOW LOCATION ONLY)



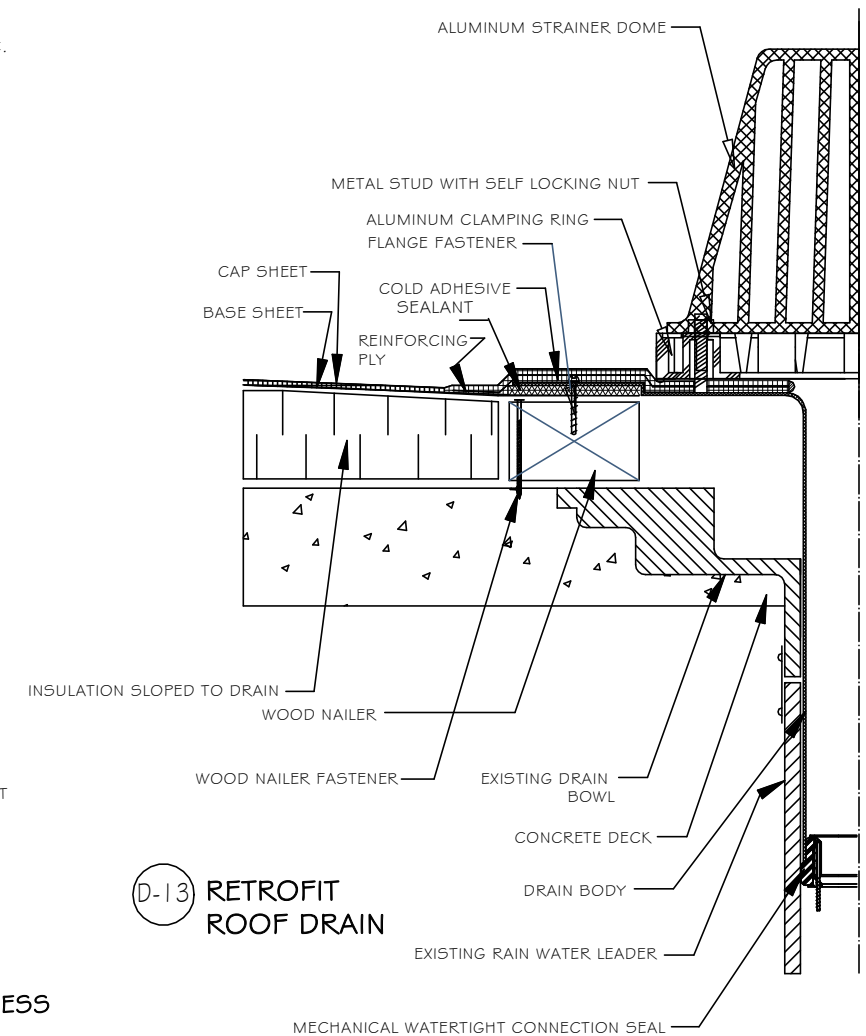
D-10 BASE FLASHING WITH TWO-PIECE SHEET-METAL COUNTERFLASHING



D-11 BASE FLASHING WITH METAL COPING



D-12 BASE FLASHING AT EQUIPMENT SUPPORT RAIL & ROOF ACCESS
(FLASHING TO THE ROOFSIDE ONLY FOR ACCESS)



D-13 RETROFIT ROOF DRAIN

Notes:

1		05/2015
No.	Revision/Issue	Date

University of South Carolina
Russell House
Grand Market Place (GMP)
Roof Replacement
(H27-2223)

D-3
(Roof Details)

Prepared by
Lyon & Associates
Roofing and Waterproofing
Consultants



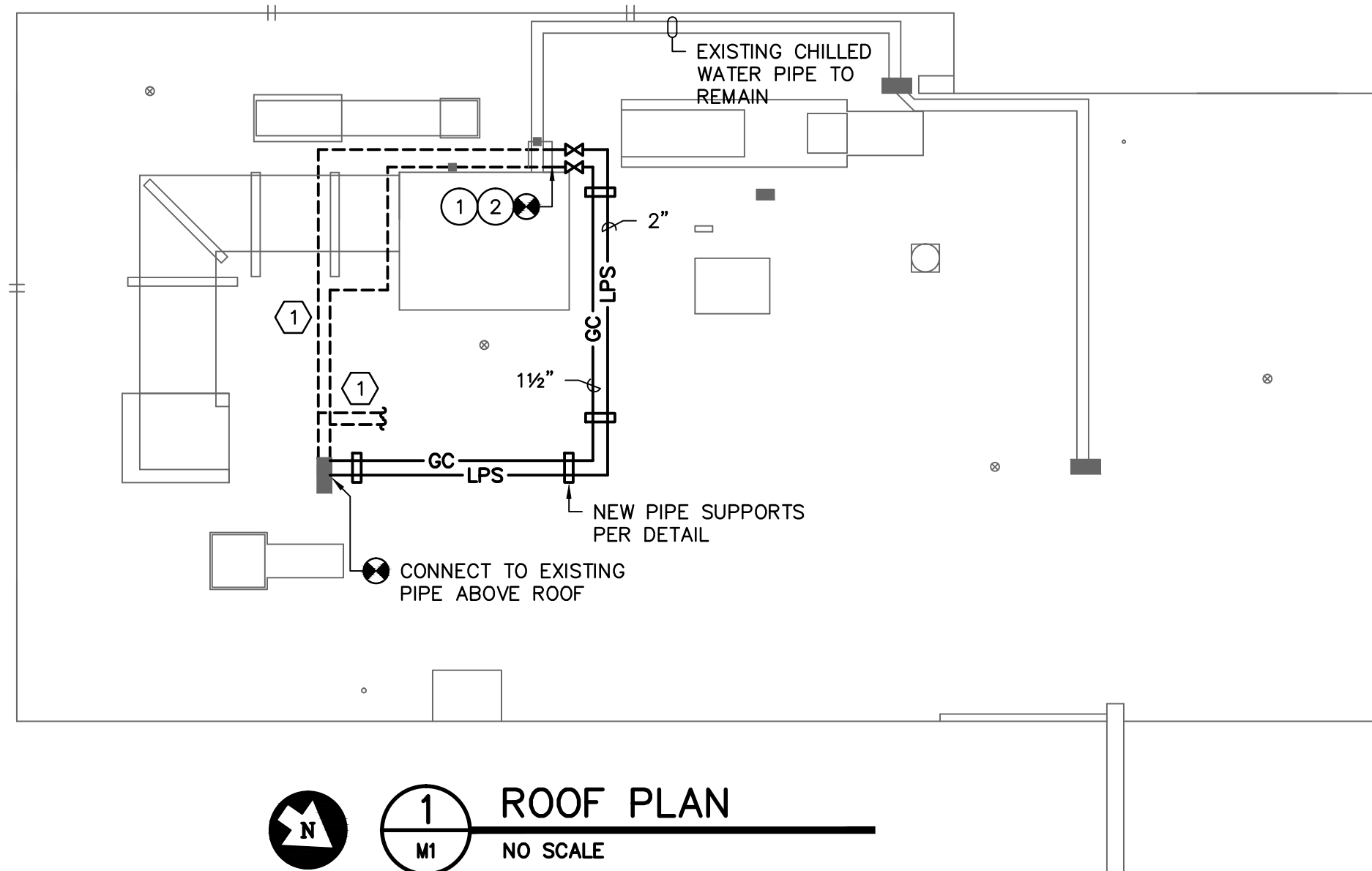
Date	05/2015	Sheet	6 of 8
Scale	Not to Scale		

DEMOLITION NOTES

- ① REMOVE EXISTING STEAM PIPE FROM MAKE-UP AIR UNIT THAT IS DEMOLISHED, AND TO EXISTING ROOF TOP UNIT. CONTROL VALVE TO BE REUSED.

NOTES TO SHEET

- ① CONNECT TO EXISTING STEAM PIPE CONNECTION AT DRIP LEG. REINSTALL CONTROL VALVE AND PROVIDE NEW STRAINER, UNION, AND VALVE.
- ② CONNECT TO EXISTING CONDENSATE DISCHARGE FROM EXISTING STEAM TRAPS AND PROVIDE NEW UNION AND VALVE.



1
ROOF PLAN
M1
NO SCALE

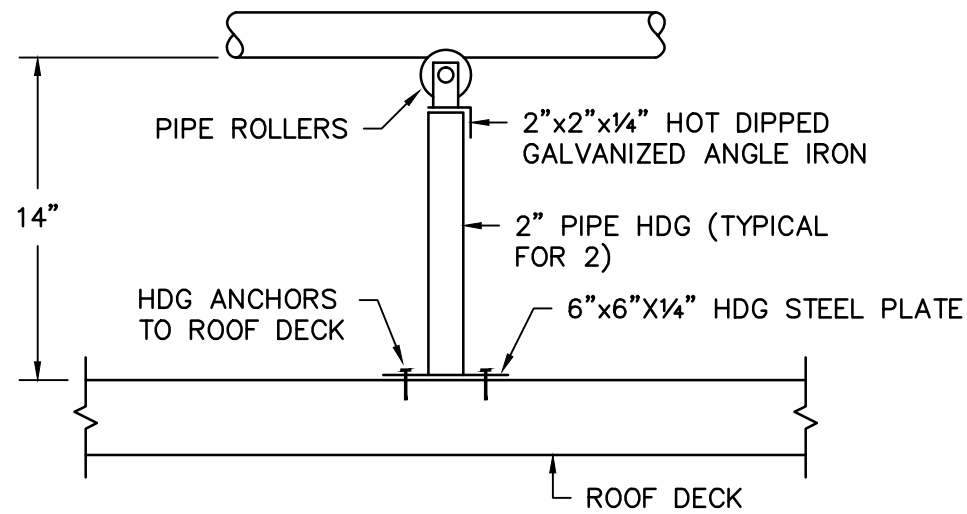
PROJECT:
**UNIVERSITY OF SOUTH CAROLINA
 RUSSELL HOUSE
 GRAND MARKET PLACE (GMP) ROOF REPLACEMENT
 H27-Z223**

SHEET NO.:
M1

PROJECT NO.: **15340**
 CHECKED BY: **WCL**
 DATE: **06/05/15**

Swygert & Associates
 CONSULTING ENGINEERS
DBA Swygert & Assoc., Ltd. Telephone: (803) 791-9300
 Post Office Box 11686 Facsimile: (803) 791-0830
 Columbia, S.C. 29211 mail@swygert-associates.com

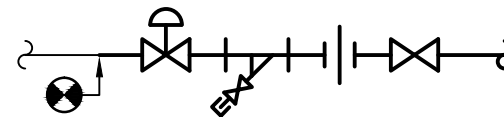
NOTE:
SPACE PIPE SUPPORTS
AT 12'-0" MAXIMUM.



PIPE SUPPORT DETAIL

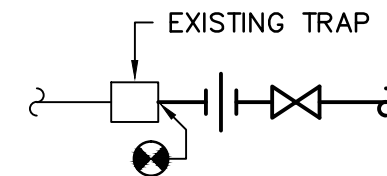
NO SCALE

LEGEND	
SYMBOL	DESCRIPTION
	LOW PRESSURE STEAM
	GRAVITY CONDENSATE
	SHUTOFF VALVE
	STRAINER WITH BLOWDOWN
	UNION
	PIPE TURNS TO, AWAY
	CONNECTION POINT OF NEW TO EXISTING



STEAM PIPE DETAIL

NO SCALE



CONDENSATE PIPE DETAIL

NO SCALE

PROJECT:
UNIVERSITY OF SOUTH CAROLINA
RUSSELL HOUSE
GRAND MARKET PLACE (GMP) ROOF REPLACEMENT
H27-Z223

SHEET NO.:
M2

PROJECT NO.: **15340**
CHECKED BY: **WCL**
DATE: **06/05/15**

Swygert & Associates
CONSULTING ENGINEERS
DBA Swygert & Assoc., Ltd. Telephone: (803) 791-9300
Post Office Box 11686 Facsimile: (803) 791-0830
Columbia, S.C. 29211 mail@swygert-associates.com